

SHARP®

ADVANCED COLOR DOCUMENT SYSTEMS

EXCEPTIONAL PERFORMANCE. OUTSTANDING IMAGE QUALITY. TRUE MULTITASKING.



MX-2300N
MX-2700N



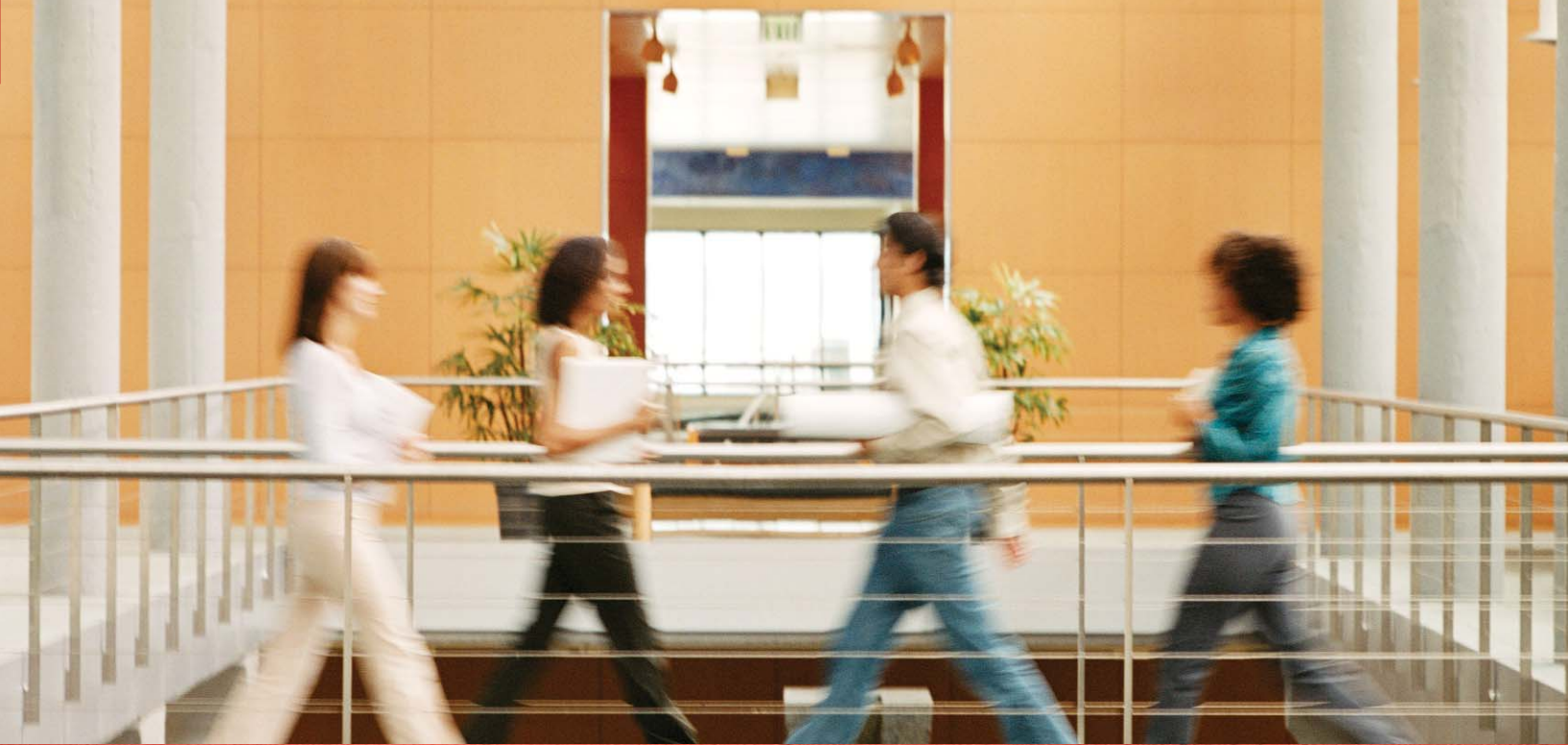
THE RENAISSANCE OF COLOR

MX-2300N/MX-2700N

A PERFORMANCE PACKED FULL-FEATURED MFP... PLUS HIGH QUALITY COLOR DESIGNED TO FIT ANY BUDGET

Sharp's new MX series color multifunction document systems are truly a departure from the ordinary. With an advanced scalable design, the new MX-2300N and MX-2700N offer all of the features you expect from a robust B&W MFP with the added benefit of cost-effective color. The MX series combine brilliant color imaging with advanced functionality at a surprisingly low total cost of ownership. Now, users can save time and money by producing professional color documents in-house with breathtaking image quality, while also watching the bottom line. With Sharp's advanced management tools, it's easy to control color usage and costs while also providing easy integration with your IT Infrastructure. And, with Sharp's Industry leading security suite, you can rest assured that your MFP and your documents are well protected.





SHARP'S NEWEST FEATURES — A DEPARTURE FROM THE ORDINARY

Productivity

Full Color

Security

Scalability

- Powerful 600 MHz true **multitasking color** document system
- **Advanced Image Stabilization** provides high quality images page after page
- Large, **easy-to-read** touch-screen display
- Industry leading **ImageSEND** function scans documents to USB devices, network folders, email and more
- **Network ready** PCL6/PCL5c printing system with direct print function and available PS3
- **Open Systems Architecture** seamlessly integrates the MFP with network applications
- Robust **document filing system** with 20 GB storage capacity
- **Large paper capacity** - up to 5,600 sheets
- **Card Shot** feature copies both sides of an ID card
- Super G3 fax option with PC fax and **inbound routing**
- Supports Sharp's **award winning** multi-level document and MFP security suite
- Advanced **web-based device management** with on-board user manuals
- **Account management system** supports LDAP and user authentication
- Environment friendly design uses **low-power consumption** and long life parts and supplies
- Supported by **My Sharp**, a dedicated customer-training website

PERFORMANCE FEATURES



THE CASE FOR IN-HOUSE COLOR HAS NEVER BEEN SO BLACK AND WHITE

IN TODAY'S BUSINESS, YOU NEED TO STAY ONE STEP AHEAD. WITH SHARP'S NEW MX SERIES, IT'S NEVER BEEN SO EASY. ADVANCED EASY-TO-USE FEATURES ALLOW YOU TO GET MORE DONE IN CONSIDERABLY LESS TIME.

RELIABILITY THAT WILL KEEP UP WITH YOUR BUSINESS

The new MX workgroup document systems are designed to provide exceptional performance and productivity day after day! With copy/print speeds up to 23 ppm and 27 ppm respectively (in both color or B&W), you will have your jobs finished with time to spare. A total on-line **paper capacity of up to 5,600 sheets** means that the MX is ready when you are.



Paper capacity up to 5,600 sheets with options

THE POWER AND FLEXIBILITY YOU NEED

With state-of-the-art color engine technology, the MX series can help your business work smarter, not harder. The MX models utilize a powerful **600 MHz true multi-tasking** controller that can easily process complicated color or B&W print jobs, even while documents are being scanned. But that's just the beginning, with a 100-sheet reversing document feeder, automatic duplexing and electronic sorting with offset stacking, you'll complete even large jobs in a snap. With Sharp's large customizable touch-screen display, operating the MX is simple and easy.

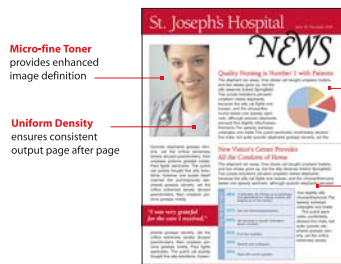


Large 8.1", touch-screen display

BEST-IN-CLASS IMAGE QUALITY

With Sharp's micro-fine toner technology and **Advanced Image Stabilization**, the new MX series offer enhanced image definition and consistent density for **beautiful output page after page**. The MX series also monitors ambient conditions during the imaging process

Best-in-Class Image Quality



Micro-fine Toner provides enhanced image definition

Uniform Density ensures consistent output page after page

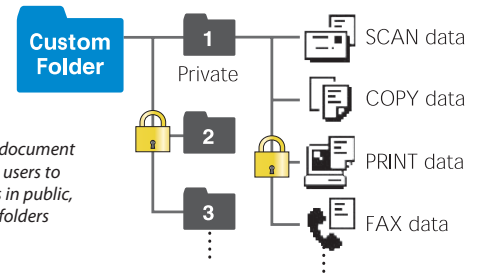
Advanced Image Stabilization monitors ambient conditions and ensures optimal color balance

Advanced Laser Technology with individual scanning units provides clear, crisp images and text

and ensures optimum quality and color balance. The results are documents with crisp, clear images and dazzling high quality colors.

INNOVATIVE DOCUMENT FILING

Sharp's easy-to-use **Document Filing System** provides up to 20 GB of hard drive space to store frequently used files, such as forms and templates. With storage capacity for thousands of pages, everyone on the network can securely share and access documents in a snap. An advanced backup system and pin-access security ensures that your files are safe.



Sharp's easy-to use document filing system allows users to store processed files in public, private or personal folders

GET PROFESSIONAL RESULTS WITH ADVANCED FINISHING

The MX series offer a choice of two high-performance finishers that can always give your documents a professional look and feel. You'll save time and money by minimizing outsourced color jobs such as proposals, presentations or newsletters. Choose from a compact inner finisher or floor-standing saddle-stitch finisher, both finishers offer three-position stapling and an available 3-hole punch.



Shown with optional inner finisher and 1,000-sheet paper desk

OR

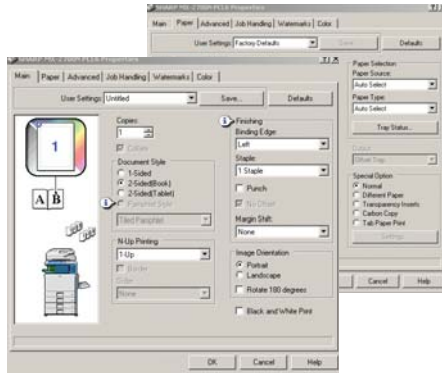


Shown with optional saddle-stitch finisher and 1,000-sheet paper desk

ADVANCED WORKFLOW FEATURES

HIGH-QUALITY NETWORK PRINTING IN BOTH COLOR AND B&W

The new MX series offer **extraordinary color image quality** without compromising the workflow features you need. With 600 x 600 dpi **color output** resolution, you can quickly produce professional, ultra-crisp documents right from your desktop. And, with features like **cover page printing**, overlay print and pamphlet print, you'll produce documents that look so good, everyone will think you had them sent out to a printing company.



Sharp's easy-to-use print drivers make accessing all of the MX features simple and easy.

ADVANCED JOB QUEUING ENSURES PRODUCTIVITY AND EFFICIENCY

With Sharp's true multi-tasking controller, the MX models utilize dual queuing capability to ensure that copy, fax, and print jobs output continuously for maximum productivity. Whereas traditional controllers perform one function at a time, the MX models can process incoming jobs to be printed even while existing jobs are output.



DIRECT USB PRINTING ADDS CONVENIENCE AND PORTABILITY

With Direct USB printing, users can print color or B&W files in a variety of popular formats directly from USB memory devices such as thumb drives. Need to print PDF brochures in a hurry for a big meeting? It's easy with the MX series, just plug in your portable USB memory device, select the file, and your job prints instantly.

DOCUMENT DISTRIBUTION

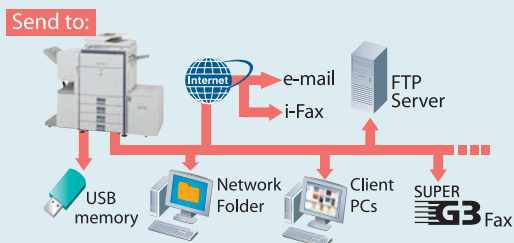
SHARP LEADS THE INDUSTRY WITH AWARD WINNING NETWORK SCANNING



ImageSEND

Share documents across the network or across the world. With Sharp's advanced **ImageSEND** feature, the MX series become powerful distribution hubs enabling you to scan documents to up to seven different destinations - including **network folders!**

Plus, with the Send-to-Group function, you can send a mixed group broadcast to Email, Fax, and Internet Fax in a single operation. With **Send-to-USB**, you can quickly scan documents to a USB memory device in popular formats such as TIFF, JPEG, PDF, and **Encrypted PDF**. Now it is even easier and safer than ever to share your files throughout the office



CONVENIENT EMAIL DISTRIBUTION

With Lightweight Directory Access Protocol (LDAP), there's no need to manually enter a recipient's complete email address. Simply enter the first few characters and the MX series automatically searches and displays a list of matching names. Plus, with **Unique File Naming**, you can enter specific filenames with custom subject fields. And, to reduce risk of unauthorized scanned documents, the MX offers **User Authentication**, which requires users to login at the machine before accessing any functions.

INTEGRATED B/W FAX AND INTERNET FAX

With the optional Super G3 fax module, the MX series become powerful facsimile systems offering advanced features such as automatic stapled/copied receptions and Inbound Fax Routing to email. Plus, Sharp's innovative PC fax driver enables users to send fax documents right from their desktop. For Internet fax capability, add the optional B/W Internet Fax expansion kit.



VERSATILE APPLICATION INTEGRATION

To help you manage your document workflow, the MX series support Sharp's new **Open Systems Architecture (OSA)**. This streamlines document workflow and enhances productivity by allowing users to have bi-directional interaction with network applications right from the machine LCD panel. Sharp's OSA uses industry-standard network protocols such as **XML** and **SOAP**, which allow the MX series to communicate with many different applications. With OSA, users can interact with critical business applications such as document management systems, Enterprise Resource Planning software, workflow applications, and more (requires optional Application Integration Module).



ADVANCED INTEGRATED SOFTWARE PROVIDES A COMPLETE OFFICE SOLUTION



"IT Friendliness" Award



THE SHARP ADMINISTRATION UTILITY SUITE

To help you manage all of the versatile features of the MX-2300N and MX-2700N, Sharp designed the Administration Utility Suite, a collection of **easy-to-use software** that simplifies installation and management.

With **Sharp's Remote Email Diagnostics**, IT managers, key operators and authorized Sharp dealers can automatically receive diagnostic email messages regarding device conditions, meter readings and more.

With **Printer Status Monitor**, network users can view printer conditions, check paper levels, toner, and more all through an easy-to use interface.

Printer Administration Utility helps IT Managers speed up installation, driver distribution and configuration of printers on the network - as well as monitor device usage for both B&W and Color jobs.

An **Embedded Web Page** offers advanced web-based management right from the desktop for both authorized users and administrators. Users can create and manage their own network scanning destinations, profiles and web-links. Administrators can access device settings, color control, account information and security settings - without leaving their desk. Available SSL encryption ensures your information is private.

With **Sharpdesk™** personal document management software, users can easily integrate scanned documents into everyday workflow. Easy-to-use tools help users organize, edit, and convert - even combine scanned files, and full text search enables users to retrieve documents in a snap.

EASILY MANAGE COLOR USAGE AND COSTS

Sharp's **advanced device management system** utilizes user groups to specify what features of the MX model can be used, such as color output for scanning, printing or copying. Plus a sophisticated accounting feature manages page counts for copy, print, fax, and scan operations for **both color and B&W**, which allows administrators to **easily manage the costs of color**. The MX models support up to **200 user accounts**.



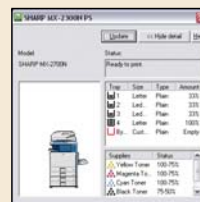
Separate print buttons for B&W and Color allow users to selectively manage use of color



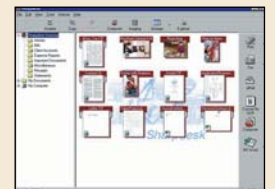
Embedded Web Page



Printer Administration Utility



Sharp Status Monitor



Sharpdesk

USER AND ENVIRONMENT FRIENDLY

AN EASY-TO-USE, LOW MAINTENANCE COLOR DOCUMENT SYSTEM THAT MAKES SENSE

The new MX-2300N and MX-2700N are designed to accommodate both large and small office environments. With a compact wingless design, the footprint of each base model is less than 24" x 27". Convenient, front-loading paper drawers and easy-to-change toner cartridges make maintaining the MX series simple and uncomplicated. Our new long-life consumable parts and supplies minimize service intervals and down time, resulting in lower operating costs.

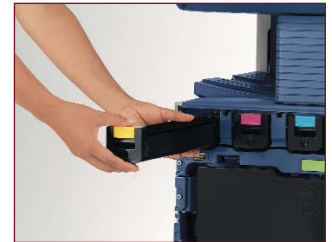
And to make managing all of the advanced features of your MX model simple and easy, ask your Authorized Sharp dealer about **MY Sharp**. This dedicated customer training website is customized to your MX model and allows you to locate resources and find information specific to your configuration, truly helping you maximize your MFP investment.

ENVIRONMENT-FRIENDLY DESIGN

Sharp's newly developed micro-fine toner technology offers a lower consumption rate than conventional toners, which results in less packaging material and longer replacement intervals. Power consumption on the MX-2300N and MX-2700N document systems is among the lowest in the industry and supports two different energy saving modes to reduce or shut off power after a set interval.



My Sharp makes managing all of the features of the MX simple and easy



Color-coded slide-in supplies are easy to replace

SHARP'S ADVANCED SECURITY PROTECTS YOUR BUSINESS

DATA SECURITY

To help secure your electronic documents, the MX-2300N and MX-2700N document systems offer several layers of network and data security to protect valuable data. As the leader in office equipment security, Sharp enables IT professionals to safely deploy digital copying, printing, scanning and faxing in any business or government environment.



SECURE WALK-UP ACCESS

The MX series utilize an advanced Account Management System, which enables administrators to setup authority groups for up to 200 users. Enabled either by account code or user authentication login, this easy-to-use system can lock out unauthorized walk-up users, as well as help your company control costs by restricting color output and other features.



SECURE THE OUTPUT

To protect your printed documents from unauthorized viewing, the MX series offer Confidential Printing, which requires users to enter a PIN code in order to print their queued document. Additionally, Secure Fax Release ensures received fax documents are held in memory until an authorized user enters a PIN code.



SECURE NETWORK SCANNING ACCESS

To protect your network from unauthorized email communications, the MX series support user authentication, which requires users to login before performing any network scanning operations.



SECURE DEVICE ACCESS OVER THE NETWORK

To restrict access to the device over the network, the MX series offers IP/MAC address filtering, protocol enable/disable and port management for maximum security.



SECURE YOUR DATA

To protect your data, the MX series offer an optional data security kit, which encrypts document data using 128-bit encryption. Additionally, the data security kit erases the memory on the hard drive by overwriting the encrypted data up to seven times, offering an unprecedented level of assurance.



SECURE THE AUDIT TRAIL

Sharp offers hardware and software accessories that help you control, access, and track usage across your entire office equipment fleet.

These scalable security offerings aim to protect your intellectual property, preserve confidential information and enable your business to meet regulatory requirements, such as the Health Insurance Portability and accountability Act (HIPAA), and the Gramm Leach Bliley Act (GLB). For additional information visit: www.sharppusa.com/security

MX-2300N/MX-2700N SPECIFICATIONS

Main Specifications

Base Models	MX-2300N/2700N: Base models include 600 MHz multi-tasking controller, 40 GB hard drive with document filing system, PCL5c/PCL6 network printing, network scanning, 100-sheet reversing single pass feeder, auto duplex, two 500-sheet paper drawers and 100 sheet bypass
Type	Desktop, color multifunction digital document system
Functions	Copy, print, network print, network scan, document filing and fax ¹
Copy System	Dry electrostatic transfer/Dual component developer/Magnetic brush development/OPC drums/Heat Roller fusing/Xenon lamp exposure
Originals	Sheets and bound documents
Max Original Size	11" x 17"
Copy Size	Min. 5 1/2" x 8 1/2"; Max. 11" x 17"
Copy Speed	MX-2300N: 23 ppm B&W/23 ppm color MX-2700N: 27 ppm B&W/27 ppm color
Multiple Copy:	Max. 999 copies
First Copy time:	Platen glass: 6.3 seconds (B&W); 8.9 seconds (color) RSPF: 8.8 seconds (B&W); 13.9 seconds (color) (Based on letter size original using copy tray 1 with laser-unit motor running)
Warm Up Time	80 Seconds or less
Magnification	25% to 400% (1% increments and 9 presets; RSPF 25%-200%)
Original Feed System	100-sheet reversing single pass feeder (RSPF) with original size detection
Scan Speed	Up to 27 OPM (copy); up to 48 OPM (network scan/fax) based on single-side letter originals using standard resolution
Original Sizes	5 1/2" x 8 1/2"; 8 1/2" x 11"; 8 1/2" x 11" R; 8 1/2" x 14"; 11" x 17" (13-34 lbs. bond)
Paper Feed System	Standard: two 500-sheet paper drawers (letter, legal, ledger, statement size) and 100-sheet bypass tray (letter, legal, ledger, statement, envelope size) ² . Optional: One 500-sheet paper drawer (letter, legal, ledger, statement size) or two 500-sheet paper drawers (letter, legal, ledger, statement size) and 3500-sheet large capacity tray (letter size). See local dealer for configurations.
Paper Types	Paper drawers and large capacity tray: 16-28 lb. bond paper. Other paper types include plain, pre-printed, recycled, pre-punched, letterhead and color paper. Bypass Tray: 16-28 lb. bond (plain paper), 15-16 lb. bond (thin paper), 28-56 lb. bond (heavy paper), 20-24 lb. bond (Monarch/Com-10 envelope), tab paper (letter only). Other types include label paper, gloss paper, pre-printed, recycled, pre-punched, letterhead, color, and OHP film.
Duplexing	Standard automatic duplex copying and printing
CPU	600 MHz RISC processor
Interface	RJ-45 Ethernet (10/100BaseT), USB 2.0 (host port), USB 2.0 (device port)
Memory	Standard 768 MB (copier); 640 MB (printer/network scanning)
Hard Disk Drive	40 GB: 20 GB for document filing (10 GB temporary folder/10 GB custom folder) each folder stores approx. 1400 pages or 1000 files. 20 GB for printing user/job data and user manuals.
Copy Resolution	Scan: monochrome/color: 600 DPI; Copy Output (B&W/Color): 600 DPI
Color modes	Auto Color Selection (ACS), Full Color Mode, Monochrome (B/W), 2 Color Mode, Single Color mode
Exposure Control	Modes: Text, Text/Photo, Text/Printed-Photo, Printed-Photo, Photo Settings: Auto exposure control or 9 step manual exposure
Halftone	256 gradations/2 levels (monochrome)
Copy Features	Scan-Once Print-Many, electronic sorting, offset-stacking, Auto Color Selection (ACS), Auto Paper Sensing (APS), Auto Magnification Sensing (AMS), auto tray switching, rotation copy, mirror copy, tandem copy, book copy, margin shift, tab-paper insertion, edge erase, center erase, dual page copy, cover pages, insert pages, OHP insertion, job build, card shot, reverse image, black-white reversal, centering, proof copy, 2-in-1/4-in-1, pamphlet, photo repeat, document filing, account management, job programs, date/text/page stamp (color).
Account Control	Up to 200 users. Supports user-number authentication (on device), login name/password (on device) or login name/password (on device via LDAP).
Output Tray	Main output tray (top) 500 sheets (face down); optional exit tray (right side)
Capacity	100 sheets (face down)
Firmware	Flash ROM with USB and network update capability.
Power Source	AC 100-127 VAC, 60 HZ, 12 Amps
Power Consumption	Maximum: 1440 W or less; Sleep Mode: 13 W or less Low Power Mode: 138.55 W or less (MX-2300N)/153.95 W or less (MX-2700N)
Weight	Approx. 256 lbs. (base model)
Dimensions	Base Configuration: 24 13/32" (w) x 26.8 3/8" (d), x 37 25/64" (h)

- Some features require optional equipment
- Paper capacity is based on specified paper types
- 1200 DPI printing requires optional PS3 kit
- PS printing requires optional PS3 kit
- Actual transmission time will vary based on line conditions
- Based on Sharp Standard Test Chart with approximately 700 characters, letter size in standard resolution

Network Printing System (standard)

Emulation	PCL6/PCL5c compatible, optional PS3
Resolution	1200 dpi (monochrome), 600 dpi, 300 dpi ³
Print Speed	23/27 ppm (8 1/2" x 11" lateral feed, standard resolution)
Print Drivers	Windows 98/ME, NT4.0 (with SP5 or later), 2000, XP, 2003 server; MAC OS 9, OSX (including 10.4) PPD only
Software	Print drivers, printer status monitor and printer administration utility
ROPM	Yes (rip once print many)
Features	Continuous printing, duplex printing, pamphlet printing, N-up printing, image rotation, different cover page/last page, transparency inserts, tab printing, carbon copy print, fit-to-page, poster print, margin shift, mirror image, watermarks, overlay, confidential print, confidential batch print, print hold, proof print, bypass printing, job priority, job control, tandem printing and direct printing (Note: some features not available on certain print drivers).
Direct Printing	File Types: TIFF, JPEG, PCL, TXT, PDF, Encrypted PDF, and PS ⁴ Methods: FTP, Web page, Email and USB memory
Resident Fonts	80 outline fonts
Interface	RJ-45 Ethernet connection; 10/100 BaseT; USB 2.0
Operating Systems	Windows 98/ME, NT 4.0, XP, 2003 Server, Novell Netware 3x, 4x, 5x, MAC OS 9, OSX, (including 10.4)
Network Protocols	TCP/IP for Windows and Unix environments including HTTPS and SSL. IPX/SPX for Novell environments and EtherTalk for Macintosh environments
Printing Protocols	LPR, IPP, PAP, Raw TCP (port 9100), FTP, Novell Pserver/Rprinter
Network Security	IP/MAC address filtering, protocol enable/disable, port management, user authentication and document administration.
Network Scanning System (standard)	
Max Original Size	11" x 17"
Optical Resolution	600 DPI
Output Modes	600 dpi, 400 dpi, 300 dpi, 200 dpi, 100 dpi
Scan Modes	Color, monochrome, grayscale
Image Formats	Monochrome: TIFF, PDF, Encrypted PDF Color: Grayscale, Color TIFF, JPG, PDF, Encrypted PDF Internet Fax: TIFF-FX (TIFF-F/TIFF-S)
Image Compression	Monochrome Scanning: Uncompressed, G3 (MH), G4 (MR/MMR) Color/Grayscale: JPEG (high, middle, low) Internet Fax mode: MH/MMR (option)
Scan Destinations	E-mail, Desktop, FTP, Folder (SMB), USB, Internet fax (option), Super G3 fax (option)
One-Touch	Up to 999 destinations (combined with scan destinations)
Group Destinations	Up to 500
Programs	48 (combined)
Max. Jobs in Memory	Up to 94
Network Protocols	TCP/IP (includes SMTP, LDAP, FTP, SMB, POP, ESMTMP)
Network Security	E-mail server user authentication and user account control
Configuration Method	Web-based management with user/administrator level login security
Software	Sharpdesk desktop document management software (1 user license)

B&W Super G3 Fax Kit (option)

Transmission Mode	Super G3, G3
Modem Speed	33.6 KBPS ⁵
Compression Type	JBIG, MMR, MR, MH
Scanning Method	Sheet fed simplex or duplex or book
Max. Transmit Resolution	400 DPI (ultra-fine)
Transmission Speed	Approximately 2 Seconds with JBIG ⁶
Auto Dialing	Up to 999 destinations (combined with scan destinations)
Group Destinations	Up to 500
Inbound Routing	Forwards received fax data to Email
Long Length	Up to 31.5" (for transmission)
Originals	
Programs	48 (combined)
Memory	8 MB (exclusive)
Halftone	256 levels
Features	Quick on-line transmission, direct transmission, F-Code transmission/ reception, rotate transmission, anti-junk fax reception, automatically staple received faxes, secure fax release, out of paper memory reception, auto redial, duplex reception transaction reports, activity reports and PC fax.

Inner Finisher (option)

Type	Built-in finisher (hole-punch unit option)
Output Capacity	500 sheets (letter or statement) or 250 sheets (12" x 18", ledger, or legal)
Output Delivery	Face down
Stapling Media	Plain paper, (letter, legal, or ledger size)
Stapling Positions	1 front, 1 rear, or both
Power Source	Supplied from main unit
Max. Pages for Stapling	50 sheets (letter size) or 25 sheets (legal, ledger or mixed same-width size)
Stapled Sets	30 bundles or 500 sheets (letter or statement size) or 30 bundles or 250 sheets (legal or ledger size)
Hole Punching	Optional hole-punch unit MX-PNX1B (3-hole/2-hole)
Weight	Approx: 23.6 lbs.
Dimensions	25 12/64" (w) x 23 27/64" (d) x 8 5/64" (h) (includes extended tray)

Saddle Stitch Finisher (option)

Type	Console finisher with dual exit trays (mounts on left side of host machine)
Output Trays	Upper tray: Offset stack tray Lower tray: Book tray for saddle stitch
Output Capacity	1000 sheets (letter/statement size) or 500 sheets (legal, ledger or letter-R size)
Max. Pages for Stapling	30 sheets (letter/statement) or 25 sheets (legal, ledger or mixed same-width)
Output Delivery	Face down
Stapling Media	Plain paper, letter/legal/ledger size or mixed
Stapling Positions	1 front, 1 rear, or both
Saddle Stitch Function	Center stitch/center folding (2 staples) letter/ledger paper sizes
Saddle Stitch	Up to 10 sets (6-10 sheets per set)/up to 20 sets (1-5 sheets per set)
Maximum Sets	
Power Consumption	52 W or less
Hole Punching	Optional hole punch unit AR-PN1B (2 holes/3 holes)
Weight	Approx: 101.4 lbs.
Dimensions	26 11/64" (w) x 24 1/64" (d) x 41 21/64" (h) (with tray extended)

Large Capacity Tray (option)

Type	Large capacity paper feed desk
Paper Size	Letter size, 16-21 lbs. Bond
Capacity	3500 sheets
Paper Types	Plain paper, pre-printed, recycled, letterhead, pre-punched and colored paper
Power Source	Supplied from main unit
Power Consumption	26.4 W, 40.8 W when tray is rising
Weight	Approx: 63.9 lbs.
Dimensions	14.9/16" (w) x 21.21/32" (d) x 20.15/32" (h)

Optional Equipment

MX-DEX1	Stand/1 x 500 Paper Desk
MX-DEX2	Stand/2 x 500 Paper Desk
MX-27ABD	Rolling Cabinet Base
MX-LCX1	Large Capacity Tray
MX-FNX1	Inner Finisher
MX-FNX2P	Saddle Stitch Finisher/Paper Pass Unit
MX-PNX1B	Punch unit (for Inner Finisher)
AR-PN1B	Punch Unit (for Saddle Stitch Finisher)
MX-TRX1	Exit Tray Unit
MX-PX1	PS3 Expansion kit
MX-FWX1	Internet Fax kit
MX-FXX1	Facsimile Expansion kit
AR-PF1	Bar Code Font kit
MX-AMX1	Application Integration Module
MX-FRX1U	Data Security kit (commercial version)

Supplies

MX-27NTBA	Black Toner Cartridge
MX-27NTCA	Cyan Toner Cartridge
MX-27NTMA	Magenta Toner Cartridge
MX-27NTYA	Yellow Toner Cartridge
MX-27NVBA	Black Developer
MX-27NVSA	Cyan/Magenta/Yellow Developer
MX-27NRSA	Drum



"IT Friendliness"
Award



As an ENERGY STAR® Partner, Sharp has determined that this product meets the ENERGY STAR® guidelines for energy efficiency.

SHARP®

SHARP ELECTRONICS CORPORATION
Sharp Plaza
Mahwah, NJ 07430-1163
1-800-BE-SHARP
www.sharpusa.com

Design and specifications subject to change without notice. Sharp is a registered trademark of Sharp Corporation. All other trademarks and registered trademarks are property of their respective holders.

CPD-3746